

DIESEL ENGINE

Engine :6 cylinder, turbo-charged with intercooler, electronic direct injection diesel engine, water-cooled, paper dry filter. Emissioned according to CEE 97/68 stage IIIA

Type	Perkins 1106D-E66TA
Max power	110 kW - 150 HP
Rated rpm	2200
Net power ISO/TR 14396	107 kW - 146 HP
Net power EEC/ 80/1269	107 kW - 146 HP
Bore	mm 105
Stroke	mm 127
Displacement	cm ³ 6600

ELETTRIC SYSTEM

Battery	12 Volt
Capacity EN 60095-1	200 Ah - 1350 A
Alternator rating	100 A
Reverse warning	Standard
Wiring according with	IP 67 e DIN 40050

TRANSMISSION

Hydrostatic transmission with automatic power regulation and closed circuit with variable displacement pump and two motors.

Three forward/reverse speed with fully automatic gear shift and single-lever control

Gearbox with automatic gears and clutch to disconnect one motor in travelling speed.

		<i>forward</i>	<i>reverse</i>
1 st gear	km/h	0 ÷ 8	0 ÷ 8
2 nd gear	km/h	0 ÷ 17	0 ÷ 17
3 rd gear	km/h	0 ÷ 39	0 ÷ 39

AXLES

Two heavy duty axles with planetary final drivers in each wheel.

Fixed rigid drive axle on front chassis section.

Oscillation drive axle on rear chassis section up to a total angle of 20°

Transfer gearbox transferring movement directly to the rear and to the front axle via a transmission shaft.

Self locking limited slip differential on front axle.

Self locking limited slip differential on rear axle (optional).

BRAKES

Service : hydraulic multi-disc oil brake on each wheels.

Parking : hydraulic negative brake (inside rear axle) actuated by electric control and automatically when the machine is turn off.

TYRES

Standard :	20.5 -25 16 pr
Option :	20.5 R25 - 17.5 R25 - 555/70 R24

STEERING

Servo-assisted steering **LOAD SENSING** system with separated pump

Total steering angle	80°
Inner tyres turning radius	mm 3130
Outer tyres turning radius	mm 5500
Outer bucket turning radius	mm 6050

HYDRAULIC SYSTEM

Single variable displacement piston pump with power control for the loader , second gear pump for the steering circuit

Selector switch to control arm movement speed.

Modular 2-element control valve.

Double acting hydraulic cylinders .

Hydraulic oil cooling radiator.

Full-flow oil filter on the leakage pipe.

Single servo-lever arm-control with 4-position lifting system and with 3-position bucket system

Max flow	lt/1'	150
Loader relief valve pressure	bar	280
Steering relief valve pressure	bar	175
Lift cylinders	mm	110x750
Bucket cylinder	mm	130x455
Cycle time	sec	8.5

SERVICES CAPACITIES

Engine	kg	17
Gearbox	kg	1.5
Differential	kg	18
Planetary final drive	kg	2
Hydraulic circuit	lt	130
Brake system	kg	1
Fuel	lt	220
Water cooling	lt	20

TECNICAL FEATURES

Standard bucket capacity	m ³	2,1
Bucket width	mm	2480
Static tipping load :		
- straight	kg.	9100
- full turned 40°	kg.	8000
Lifting capacity at max height	kg.	8900
Dump clearance	mm.	3850
Dump height at 42°	mm.	2950
Reach at 42°	mm.	950
Breakout force	kg	12800

DIMENSIONS AND WEIGHTS

Max. lenght in transfer position	mm	6900
Max. width in transfer position	mm	2480
Max height	mm	3200
Track	mm	1850
Tracks width	mm	2380
Wheel base	mm	2980
Ground clearance	mm	500
Standard operating weight	kg	11500
Max. operating weight	kg	12500



VF 11.63

" Z-bar LINKAGE "

The illustrations of the present folders do not necessarily show the product standard version. Data and dimensions described in this folder are not binding. Venieri reserves the right of carrying out possible changes at any time and without previous notice because of its policy of steady development and improvement of the products.



Preliminary

VF 11.63

"Z-bar" Linkage

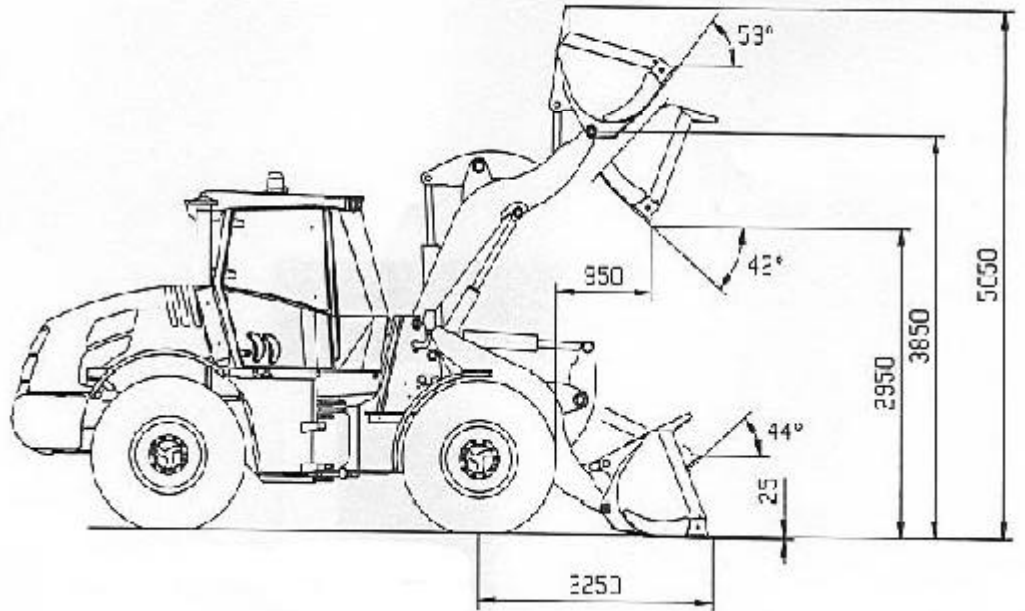
ENGINE STAGE III A - MAX POWER 150 HP
BUCKET CAPACITY 2.1 - 3.0 m³
MAX OPERATING WEIGHT 12000 kg
HYDROSTATIC TRANSMISSION • 4 WHEEL DRIVE



VF VENIERI S.p.A.
COSTRUZIONI MACCHINE INDUSTRIALI

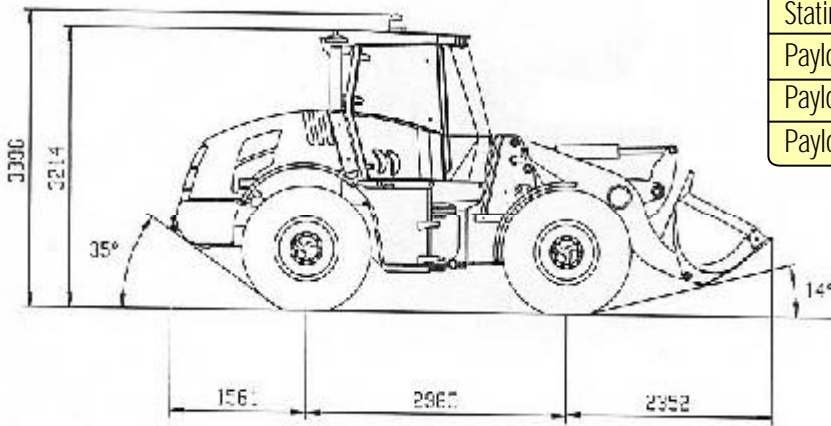


1163



Loading bucket (kg)	
Stating tipping load, full turn	8.000
Payload (50%)	4.000

Loading fork (kg) - centre of gravity 500 mm	
Stating tipping load, full turn	6.400
Payload EN 474-3 (80%)	5.150
Payload EN 474-3 (60%)	3.850
Payload DIN 24094 (50%)	3.200





VF 11.63 "Z-bar" Linkage

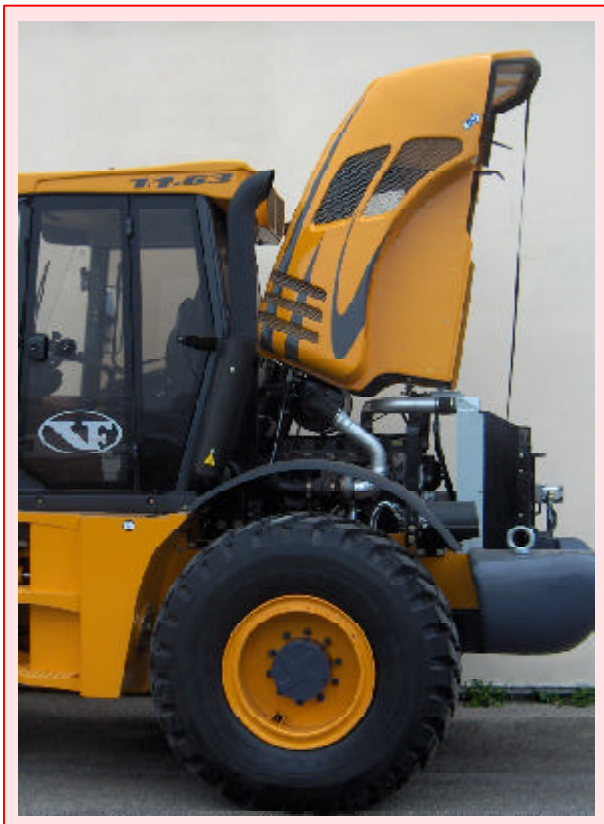
ADJUSTING THE DRIVER SEAT



STEERING COLUMN



ENGINE COVER



SWITCHES ON SIDE-DASHBOARD



VF VENIERI S.P.A.

COSTRUZIONE MACCHINE INDUSTRIALI
Via Piratello, 106 - 48022 LUGO (RA) - ITALIA
Tel. 0545/904411 - Fax 0545/30389
Servizio ricambi
Tel. 0545/904429 - Fax 0545/24555
www.vf-venieri.com



AZIENDA CON SISTEMA QUALITA'
CERTIFICATO DA DNV
UNI EN ISO 9001

