

Technical sheet :

# MT 625 E

OXYGEN



 **MANITOU**  
HANDLING YOUR WORLD

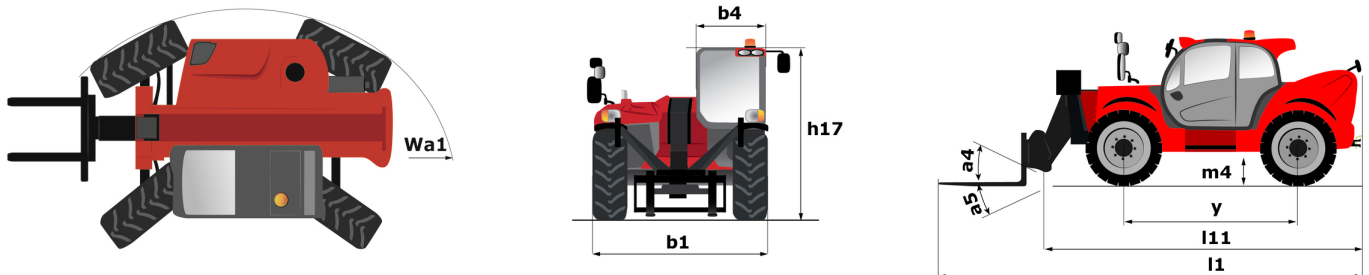
Capacities		Metric
Max. capacity		2500 kg
Max. lifting height		5.85 m
Maximum outreach		3.36 m
Breakout force with bucket		3770 daN
Weight and dimensions		
Overall length to carriage	l11	3.83 m
Overall length (with forks)	l1	5.09 m
Overall width	b1	1.81 m
Overall height	h17	1.92 m
Wheelbase	y	2.30 m
Ground clearance	m4	0.33 m
Overall cab width	b4	0.80 m
Tilt-up angle	a4	12 °
Tilt-down angle	a5	117 °
External turning radius (over tyres)	Wa1	3.31 m
Overall weight		4755 kg
Tires type		Inflatable
Standard tires		CAMSO SKS532 12-16.5
Forks length / width / section	l / e / s	1200 mm x 125 mm x 45 mm
Performances		
Lifting		11.10 s
Lowering		8 s
Extension		7.70 s
Retraction		7.40 s
Crowd		4.45 s
Dump		4.30 s
Engine		
Max. torque		200 Nm
Drawbar pull (Laden)		2090 daN
Engine/Battery		
Drive motor power rating		40 kW
Hydraulic motor power		30 kW
Battery technology		Lithium-ion
Battery capacity		348 Ah
Battery energy		35 kWh
Charger Power / Phase / Current type		3 kW / Single-phase / AC
Electric circuit		
Battery voltage / capacity		100 V / 348 Ah
12V Battery capacity		74 Ah
Transmission		
Transmission type		Electrical
Number of gears (forward / reverse)		1 / 1
Max. travel speed		20 km/h
Parking brake		Hydraulic spring release SAHR
Service brake		Hydraulic
Hydraulics		
Hydraulic pump type		Gear pump
Hydraulic flow / Pressure		84 l/min-235 bar
Tank capacities		
Hydraulic oil		80 l
Noise and vibration		
Noise at driving position (LpA)		72 dB
Noise to environment (LWA)		92 dB
Vibration on hands/arms		2.50 m/s <sup>2</sup>
Miscellaneous		
Steering wheels (front / rear)		2 / 2
Drive wheels (front / rear)		2 / 2

## Options / Finishing

S : Standard / O : Optional / - : Not available

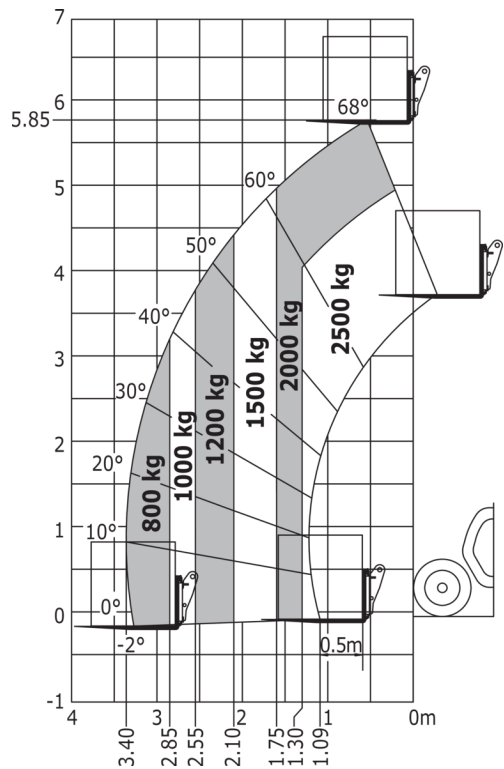
	Standard
—	
Onboard charger - 3kW AC_MT	S
<b>Operator station</b>	
12Volt Power Port	S
Adjustable and telescopic steering column	S
Air suspension fabric seat - GRAMMER	O
Document holder	O
Heating	S
Manual air conditioning	O
Phone support	O
Rear window with de-icing	O
Rear wiper	S
Roof wiper	S
Tuner car radio - 50W	O
<b>Motorization/Power</b>	
On-board charger 9kW	O
<b>Lighting</b>	
Flat Led Rotating Beacon	O
led front road lights	S
LED front work lights on cab (x2)	S
LED rear work lights on cab (x2)	S
<b>Security</b>	
Audio warning on reverse	S
Battery cut-off	S
Speed limiter	O
Windscreen sun visor	S

## MT 625 e - Dimensional drawing



# MT 625 e - Load chart

Machine on tires with forks Metric





 **MANITOU**  
**HANDLING YOUR WORLD**

**Head Office**

B.P. 249 - 430 rue de l'Aubinière  
44150 Ancenis Cedex - France

Tel: +33 (0)2 40 09 10 11 - Fax: +33 (0)2 40 09 10 97

[www.manitou.com](http://www.manitou.com)



This publication provides a description of the configuration versions and options for Manitou products, which may differ for equipment. The equipment presented in this brochure may be part of a series, as an option, or it may not be available, depending on the versions. Manitou reserves the right, at any time and without notice, to amend the specifications described and represented. The specifications provided do not bind the manufacturer. For more details, please contact your Manitou agent. This is not a contractually binding document. The presentation of the products is not contractually binding. List of specifications non-exhaustive. The logos as well as the visual identity of the company are owned by Manitou and cannot be used without authorisation. All rights reserved. The photos and diagrams contained in this brochure are only provided for consultation and information purposes.

MANITOU BF SA - Limited company with board of directors - Share capital: 39,668,399 euros - 857 802 508 RCS Nantes